

THE PROJECT

Science improvements were a first-priority in DOBER LIDSKY MATHEY's (DLM) 1997 Master Plan for St. Lawrence University. The existing facilities were insufficient and not appropriate for the hands-on, research-rich, interdisciplinary pedagogy advanced by the science and mathematics departments. DLM was retained to develop a facility program for these departments and to determine a strategy for improvements using a combination of new and renovated space.

CHALLENGE

The first challenge was to define facility needs for the six departments — biology, chemistry, geology, mathematics, physics, and psychology — and programs in interdisciplinary environmental studies and anthropology. The second challenge was to develop a plan that would be realistic for the University to implement and that could be achieved without disrupting the ongoing academic programs.

SOLUTION

DLM worked with faculty, staff, and students to define facility needs for the sciences and mathematics, refining the program as necessary so that it would be within a feasible cost range while maintaining the integrity of the academic goals. Using the resulting facility program, DLM developed concept plan variations from which a four-phase implementation plan was selected. The first phase was to be construction of a new biology and chemistry building that would provide shared resources for such disciplines as biochemistry and neuroscience. With that building in place, existing space would be vacated and could then be renovated over a second and a third phase. The fourth phase would provide additional new space.

RESULTS

Renovation and new construction is now complete providing the University with 130,000 additional square feet of teaching and research labs; conference rooms; and offices for departments and faculty. Specifically, three departments (Biology, Chemistry, and Psychology) are able to share collaborative lab and classroom space in the new Johnson Hall of Science. Other science departments, including Geology, Mathematics, Computer Science and Statistics, and Physics, were able to expand into renovated space.

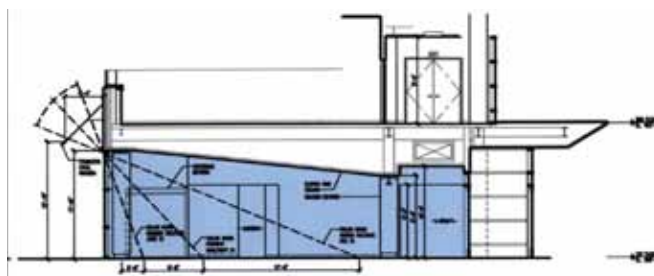
*Project completed under previous name: Dober, Lidsky, Craig and Associates, Inc.



ILLUSTRATIVE CAMPUS PLAN



RICHARD GREEN, STUBBINS ASSOCIATES



JOHNSON HALL OF SCIENCE

REFERENCE

Dr. Thomas Greene
Psychology Professor
315 229 5115
tgreene@stlawu.edu

PRINCIPAL IN-CHARGE

Arthur J. Lidsky, AICP, FAAAS
Study Director

Dorothy Atwood, AIA
Project Planner



DOBER LIDSKY MATHEY
CREATING CAMPUS SOLUTIONS